

# Leptin Induces Increased $\alpha 2(I)$ Collagen Gene Expression in Cultured Rat Hepatic Stellate Cells

Neeraj K. Saxena, George Saliba, Jeffrey J. Floyd, and Frank A. Anania\*

Hepatology Section, Division of Gastroenterology, Department of Medicine, University of Maryland School of Medicine, Room N3W50, 22 South Greene Street, Baltimore, Maryland 21201

**Abstract** Leptin is a 16-kDa hormone with an array of biologic actions. We, and others, have demonstrated that leptin is critical to the development of liver fibrogenesis both in vitro and in the lean littermates of *ob/ob* mice exposed to carbon tetrachloride (CCl<sub>4</sub>). Controversy exists as to whether leptin can act as a direct cytokine in the development of increased collagen expression, and whether *ob/ob* mice are resistant to potential injury from CCl<sub>4</sub>. Here, we provide evidence that strongly suggests that leptin acts to increase nascent production of mRNA for the  $\alpha 2(I)$  collagen gene based upon ribonuclease protection analysis (RPA). Actinomycin D, but not cyclohexamide, or the pan-neutralizing antibody to transforming growth factor beta one (TGF $\beta$ 1), significantly diminished the effect of leptin on total  $\alpha 2(I)$  collagen mRNA levels. Further evidence that leptin acts directly on HSCs to alter gene expression in liver wounding is demonstrated by enhanced binding of phosphorylated signal transduction and activator of transcription factor 3 (pStat3) to a cis-inducible element (SIE) oligonucleotide by electrophoretic mobility shift assay (EMSA). This consensus sequence is responsible for production of a critical collagen transcription factor, AP-1. Finally, we have demonstrated from the *ob/ob* mouse model that these animals are at least as sensitive to CCl<sub>4</sub> as their respective lean animals as assessed by serum alanine aminotransferase (ALT) measurements. Taken together, the current data provide a continued framework that leptin is a profibrogenic cytokine and plays a key role in liver fibrosis. *J. Cell. Biochem.* 89: 311–320, 2003. © 2003 Wiley-Liss, Inc.

**Key words:** leptin; collagen; fibrosis; stellate cells; fatty liver

Leptin is a 16-kDa hormone that has an array of biological effects as previously reported [Zhang et al., 1994; Campfield et al., 1995; Pelleymounter et al., 1995; Caro et al., 1996]. Recently, we, and others have shown that leptin plays a key role in the development of liver fibrosis, a dynamic process that ultimately leads to cirrhosis and liver failure, regardless of the etiology. Hepatic stellate cells (HSCs) are the principal collagen-producing cells in the liver but only upon their activation. This process

results in HSC proliferation, enhanced gene transcription, the loss of retinoid stores, and a myofibroblasts-like phenotype characterized by an abundance of smooth muscle proteins including  $\alpha$ -smooth muscle actin [Friedman, 2000].

In Western countries, cryptogenic liver disease has emerged as the third leading cause for cirrhosis and liver transplantation with chronic alcoholism and chronic hepatitis C virus remaining as the two major causes [Greeve et al., 1993]. Clinical data strongly suggests that obesity, type II diabetes mellitus, and dyslipidemia—clinical conditions characterized by both insulin and leptin resistance—may be epidemiological factors associating such metabolic derangements with cirrhosis for which no specific cause has been previously identified [Poonawala et al., 2000]. Furthermore, new clinical data suggests that hepatic steatosis, or non-alcoholic fatty liver, or steatohepatitis with necrosis, or non-alcoholic steatohepatitis, are also components of the metabolic syndrome X previously described [Diehl, 1999].

Grant sponsor: NIAAA; Grant number: 12933; Grant sponsor: NIDDK; Grant number: 062092; Grant sponsor: Department of Medicine, University of Maryland.

\*Correspondence to: Frank A. Anania, Hepatology Section, Division of Gastroenterology, Department of Medicine, University of Maryland School of Medicine, Room N3W50, 22 South Greene Street, Baltimore, MD 21201.

E-mail: fanania@medicine.umaryland.edu

Received 21 November 2002; Accepted 9 January 2003

DOI 10.1002/jcb.10494

© 2003 Wiley-Liss, Inc.

Previously, we have demonstrated that the activated, but not quiescent, HSCs contain leptin and such cells possess the long form of the leptin receptor (OB-R<sub>L</sub> or OB-R<sub>b</sub>). Furthermore, we have subsequently demonstrated that in vitro leptin results in a significant increase in the mRNA for the  $\alpha 2(I)$  collagen gene as assessed by RNase protection analysis. We have also reported that the lean littermates of *ob/ob* mice, but not the *ob/ob* mice themselves, treated with carbon tetrachloride (CCl<sub>4</sub>) developed fibrosis and had increased numbers of  $\alpha$ -SMA positive cells [Saxena et al., 2002]. While other groups have shown similar findings both in vitro and in vivo, they postulate that leptin's actions are mediated through endothelial cell or Kupffer cell signaling which act to release the potent mammalian profibrogenic cytokine, transforming growth factor beta one (TGF $\beta$ 1) [Honda et al., 2002; Ikejima et al., 2002].

In the present study, we present data that support an independent role of leptin as a profibrogenic cytokine that acts, in vitro, to increase HSC collagen gene expression independent of TGF $\beta$ 1. Further, we present follow-up data regarding the role of inflammation, in the previously reported in vivo study, which demonstrate that the presence of leptin, and not the presence of inflammation, is essential for the development of liver fibrosis.

## MATERIALS AND METHODS

### Isolation and Culture of Hepatic Stellate Cells

Activated rat HSCs were cultured as described previously [Friedman and Roll, 1987; Anania et al., 1995]. All rats received human care, and the Institutional Animal Care and Use Committee of the University of Maryland approved the HSC isolation protocol. In brief, after in situ perfusion of the liver with 200 mg/dl pronase E (Boehringer Mannheim, Indianapolis, IN) followed by perfusion with 80 mg/dl collagenase B (Crescent Chemical, Hauppauge, NY), dispersed cell suspensions were layered on a two-step discontinuous density gradient of 8.2 and 15.6% Nycodenz<sup>®</sup> (Sigma, St. Louis, MO). The resulting upper layer consisted of more than 95% stellate cells. Cells were placed in Dulbecco's Modified Eagles Medium (DMEM Gibco-BRL, Grand Island, NY) containing 20% fetal bovine serum (FBS) [Flow Laboratories, Naperville, IL]. The purity of stellate cells was assessed by intrinsic auto fluorescence and

detection of alpha smooth muscle actin ( $\alpha$ -SMA). The viability of all cells was verified by phase-contrast microscopy as well as the ability to exclude propidium iodide. Cell viability of all cultures used for study was greater than 95%.

### RNA Extraction and Ribonuclease Protection Analysis (RPA)

Total RNA was isolated from culture-activated HSCs as described previously [Chomczynski and Sacchi, 1987]. Two micrograms of total RNA from untreated HSCs was reverse-transcribed to cDNA using RETROscript First Strand Synthesis Kit for RT-PCR (Ambion, Austin, TX) as recommended by the manufacturer. A 533-base pair fragment of the  $\alpha 2(I)$  collagen gene with the T7 promoter was constructed by PCR from above RT reaction. Subsequently, a 533-nucleotide antisense riboprobe was transcribed with T7RNA polymerase (MAXI script kit, Ambion) by using [ $\alpha$ <sup>32</sup>P] uridine triphosphate (specific activity, 800 Ci/mmol) [Amersham Pharmacia Biotech, Piscataway, NJ]. RPAs were performed using the RPAIII kit (Ambion). Gel-purified riboprobes (10<sup>5</sup> cpm for  $\alpha 2(I)$  collagen gene and 3  $\times$  10<sup>4</sup> cpm for  $\beta$ -actin) were hybridized with 10  $\mu$ g total cellular RNA extracted from primary cultured HSCs, or yeast transfer RNA at 42°C for 18 h followed by Ribonuclease A/T1 digestion at 37°C for 30 min. Protected fragments were heat denatured and separated on 3.5% denaturing urea/polyacrylamide gels. A rat  $\beta$ -actin antisense probe was used as a control. Radioactive signals were recorded and quantitated by the BioRad<sup>®</sup> Imaging System and Quantity One<sup>®</sup> quantitation software (Life Sciences Group, Hercules, CA). The experiments were performed with freshly prepared total RNA from HSC primary cultures after leptin treatment for various time intervals. Each  $\alpha 2(I)$  collagen signal was normalized to the  $\beta$ -actin signal from the same sample, and the normalized values were expressed relative to signals in the untreated primary cultured HSC (control) cells.

### Treatment With Cyclohexamide or Actinomycin D

Primary HSCs were serum starved for 16 h and subsequently exposed to leptin alone as described previously, or a combination of leptin and cyclohexamide [10  $\mu$ g/ml] or leptin and actinomycin D [10  $\mu$ g/ml] for various time

intervals before total RNA was harvested from HSC cultures and RPA was performed for both  $\alpha 2(I)$  collagen and  $\beta$ -actin.

#### Treatment With Pan-Neutralizing Antibody to TGF $\beta$ 1

Primary HSCs were serum starved for 16 h and subsequently exposed to leptin alone or initially treated with a pan-neutralizing antibody to TGF $\beta$ 1 [40  $\mu$ g/plate] (R & D Systems, Minneapolis, MN) for 4 h prior to exposure to leptin. Total RNA was harvested as described above for specific time intervals and RPA was performed for both  $\alpha 2(I)$  collagen and  $\beta$ -actin.

#### TGF $\beta$ 1 Enzyme-Linked Immunosorbent Assay (ELISA)

Primary HSCs were grown as described above. TGF $\beta$ 1 secreted into the respective tissue culture media over the time course indicated was measured using a TGF $\beta$ 1 ELISA assay (R & D Systems) according to the manufacturer's instructions. A Becton-Dickinson ELISA plate reader was used to measure absorbance at 690 nm and concentrations were calculated using a standard curve developed simultaneously with study samples.

#### Isolation of Nuclear Proteins From Leptin-Treated HSCs

HSC cells were harvested after 16 h of incubation with media containing leptin [100 ng/ml] or 0.1% FBS. Nuclear protein extraction was performed as described elsewhere [Potter et al., 1991a,b]. Cells were washed with cold PBS, collected with a rubber policeman, and centrifuged at  $1,100 \times g$ . All steps were done on ice at 4°C. The collected cells were placed in a solution containing 10 mM HEPES, pH 7.8, containing 2 mM MgCl<sub>2</sub>; 15 mM KCl; 0.1 mM EDTA; 1 mM dithiothreitol (DTT); and 1 mM phenylmethylsulfonyl fluoride (PMSF). Cells were lysed in a Dounce Homogenizer and cell lysis was monitored by light microscopy. After isotonicity of the lysed cells was restored and centrifuged at  $6,800 \times g$ , the nuclear pellet was purified using a series of ammonium sulfate precipitations and was centrifuged at  $100,000 \times g$  for 1 h. The nuclear proteins were resuspended in 25 mM HEPES, pH 7.8, containing 50 mM KCl, 0.1 mM EDTA, 1 mM DTT, and 1 mM PMSF and 20% glycerol. The proteins were dialyzed in

100 volumes of this buffer for 4 to 6 h. Dialyzed proteins were aliquoted and stored at -70°C. Protein quantitation was performed by Lowry et al., 1951.

#### Electrophoretic Mobility Shift Assay (EMSA)

A single-stranded 20-base oligomer encoding the SIE, cis-inducible element, which contains a pStat3 consensus binding sequence [Robertson et al., 1995], and its complementary sequence was synthesized by the biopolymer facility at this institution. A double-stranded oligonucleotide was prepared using equimolar amounts of the complimentary oligonucleotides. The annealed oligo was diluted to a concentration of 2  $\mu$ M. Blunt-end probes were end-labeled with [ $\gamma$ -<sup>32</sup>P] adenosine triphosphate [specific activity, 5,000 Ci/mmol, Amersham Biosciences, Piscataway, NJ]. DNA binding assays with isolated HSC nuclear protein extracts were performed with 20  $\mu$ g as described [Anania et al., 1995]. Competition assays were performed using a 30-fold molar excess of unlabeled double-stranded DNA that was added to the reaction before the addition of labeled oligo. Super shift assays were performed with 2.5  $\mu$ g rabbit polyclonal antibodies to phosphorylated Stat3 (Anti-pStat3) [Santa Cruz Biotechnologies, Santa Cruz, CA]. All completed reaction samples were electrophoresed on 5% non-denaturing polyacrylamide gels in a running buffer containing 1X TAE (40 mM Tris-acetate 1mM, EDTA; pH 8.0), dried, and subject to autoradiography.

#### CCl<sub>4</sub> Treatment of *ob/ob* Mice and Their Lean Littermates

Male *ob/ob* mice and their lean littermates were purchased from Jackson Laboratories (Bar Harbor, ME). All animals received humane care, and the experimental protocol was approved by the Institutional Care and Use Committee of the University of Maryland. Mice were allowed free access to a laboratory chow diet and were housed for 1 week before CCl<sub>4</sub> injections. Mice were weighed and given an intraperitoneal injection of 50% CCl<sub>4</sub> (1 ml/kg) with olive oil twice weekly for 8 weeks. Control mice were also injected with 0.9% sterile saline and olive oil. All mice were killed for histologic analysis. Before sacrifice, blood was removed from the right heart. Serum ALT values were measured by Veterinary Resources using a serial multi-analyzer channel.

### Statistical Analysis

All experiments were performed three times in triplicate. Data is expressed as means  $\pm$  SEM and was considered significant if  $P < 0.05$  as assessed by the Student's *t* test.

## RESULTS

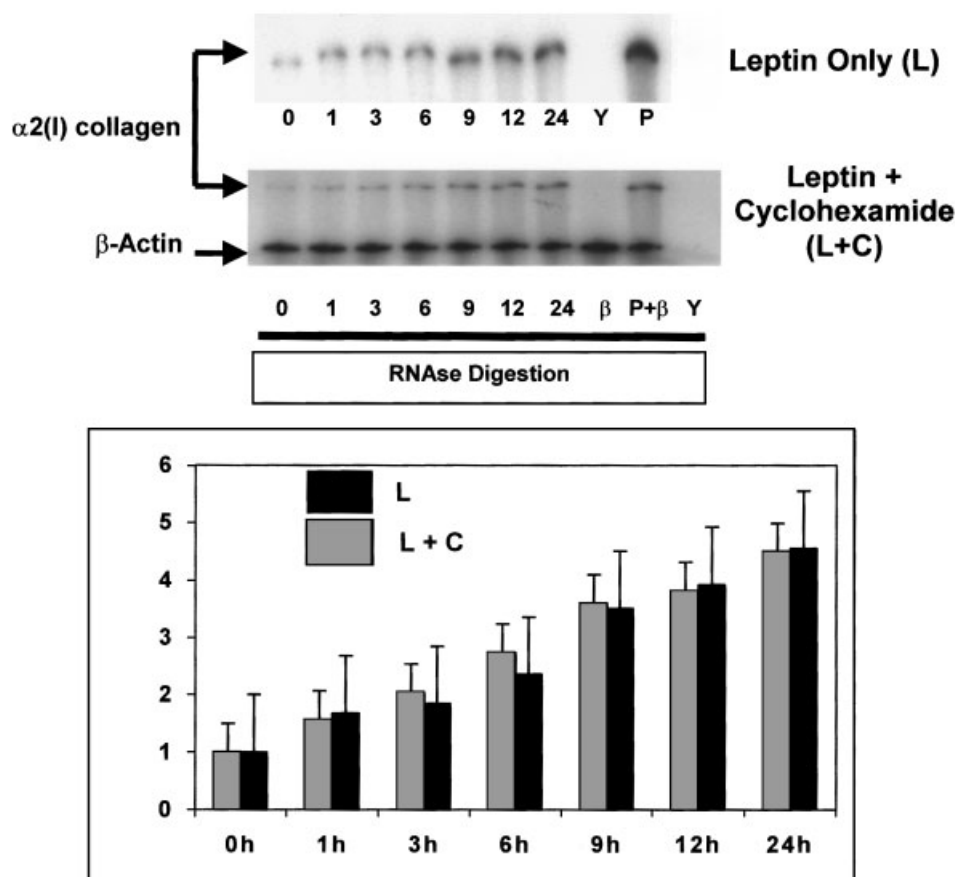
### Cyclohexamide Failed to Reduce $\alpha 2(I)$ Collagen mRNA Expression Induced by Leptin as Assessed by RPA

To determine whether protein synthesis was critical to leptin-induced  $\alpha 2(I)$  collagen gene ex-

pression, 10 ng/ml cyclohexamide, a well-known inhibitor of translation, was used in combination with leptin and mRNA expression was compared to leptin-treated HSCs alone. As is apparent in Figure 1, the addition of low-dose cyclohexamide did not affect total steady-state levels of mRNA for the collagen gene induced by leptin.

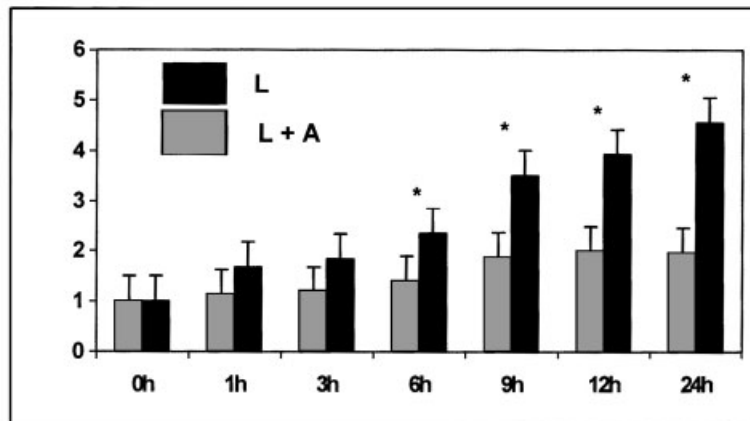
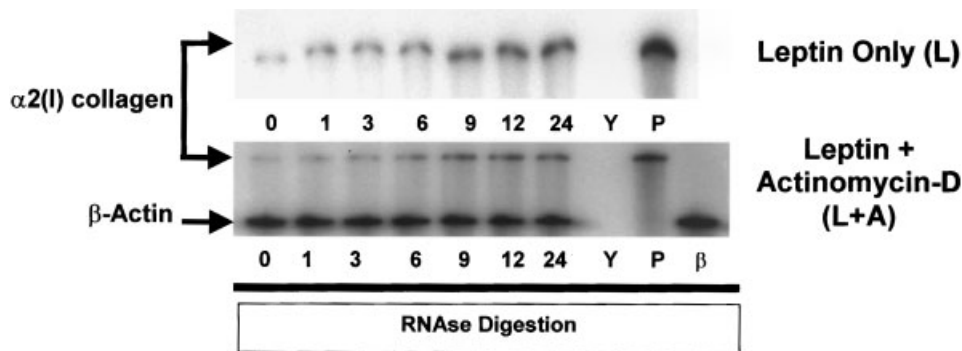
### Actinomycin D Inhibits $\alpha 2(I)$ Collagen mRNA Expression Induced by Leptin as Assessed by RPA

The RNA polymerase inhibitor, actinomycin D in combination with leptin, reduced by 50%



**Fig. 1.** Cyclohexamide fails to significantly alter leptin-induced increases in total mRNA for  $\alpha 2(I)$  collagen in HSCs. Total RNA and experimental design is as described in the text, except that HSCs were either exposed to leptin (L) or leptin plus cyclohexamide (L+C). RPA for both  $\alpha 2(I)$  collagen and  $\beta$ -actin were performed and results, including densitometric analysis comparing the two treatments are shown. Results were quantitated by phosphoimaging analysis and presented as fold increase of total mRNA assayed from three independent experiments performed in triplicate. Increase mRNA was measured against quantitation of untreated HSCs only. As can be seen, no significant changes in total mRNA for  $\alpha 2(I)$  collagen are observed between either

treatment indicating that protein synthesis is not required for the effect of leptin on the total mRNA for this gene. Y, yeast tRNA and riboprobe for  $\alpha 2(I)$  collagen with RNase reveals complete digestion of tRNA and  $\alpha 2(I)$  collagen riboprobe. P, mouse liver RNA and riboprobe for  $\alpha 2(I)$  collagen in the presence of RNase reveal protected fragments for the gene from mouse liver RNA. P +  $\beta$ , mouse liver RNA and riboprobe(s) for both  $\alpha 2(I)$  collagen and  $\beta$ -actin in the presence of RNase reveal protected fragments for both genes from mouse liver RNA.  $\beta$ ,  $\beta$ -actin mRNA was used for loading controls and as a housekeeping gene, and confirms a protected fragment from both stellate cell and mouse liver RNA. Time indicated in hours.



**Fig. 2.** Actinomycin D significantly inhibits leptin-stimulated increases in  $\alpha 2(I)$  collagen mRNA. Total RNA was harvested from leptin (100 ng/ml)-treated [L] HSCs or leptin-treated HSCs also exposed to the transcription inhibitor Actinomycin D (10  $\mu$ g/ml) [L + A] for times indicated in hours. RPA was performed for both  $\alpha 2(I)$  collagen and  $\beta$ -actin and results presented as in Figure 1. Y, yeast tRNA and riboprobe for  $\alpha 2(I)$  collagen with RNase reveals complete digestion of tRNA and  $\alpha 2(I)$  collagen riboprobe. P,

mouse liver RNA and riboprobe for  $\alpha 2(I)$  collagen in the presence of RNase reveal protected fragments for the gene from mouse liver RNA.  $\beta$ ,  $\beta$ -actin mRNA was used for loading controls and as a housekeeping gene, and confirms a protected fragment from stellate cells. Leptin alone resulted in a 4.5-fold increase over untreated HSCs, while the combination of leptin and actinomycin D resulted in less than a 2-fold increase in mRNA. \* $P < 0.05$ , Student's *t* test. Time indicated in hours.

the steady-state  $\alpha 2(I)$  collagen mRNA levels as compared to leptin-treated HSCs (Fig. 2).

#### Pan-Neutralizing Antibody to TGF $\beta$ 1 Failed to Alter $\alpha 2(I)$ Collagen mRNA Levels as Assessed by RPA

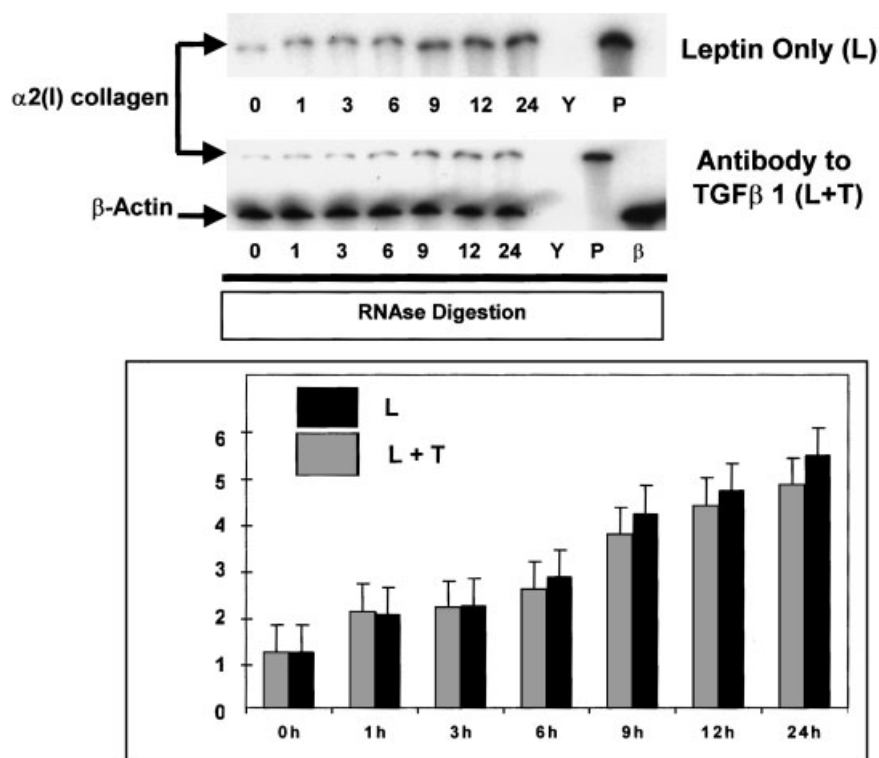
Neutralizing antibodies were used to block TGF $\beta$  action from activated HSC production in culture. TGF $\beta$ 1 autocrine feedback to activated HSCs is a well-described mechanism [Fibbi et al., 2001], which promotes hepatic fibrogenesis. As shown in Figure 3, a minor reduction in total mRNA for  $\alpha 2(I)$  collagen was observed in the presence of pan-neutralizing anti-TGF $\beta$ 1, this effect was <10% of the 5-fold induced increase in collagen mRNA expression by leptin and was not found to be statistically significant.

#### Leptin Does Not Significantly Alter TGF $\beta$ 1 Levels Produced by HSCs in Culture Compared to Untreated HSCs

To determine whether leptin induces the production of a potent profibrogenic stimulus, total TGF $\beta$ 1 levels (latent and active forms) were measured by ELISA over the time course as indicated in Figure 4. None of the TGF $\beta$ 1 levels were significantly different in the untreated HSC cultures when compare to leptin-treated HSC cultures. Note that serum was used as the control group.

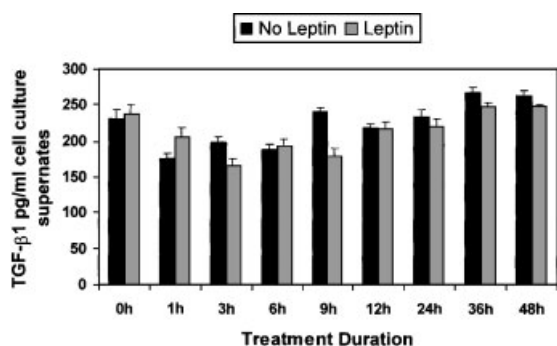
#### EMSA Reveals That Leptin-Treated HSC Nuclear Extract Enhance pStat3 Binding to its Consensus Binding Sequence Along the c-fos Promoter

Nuclear extracts from untreated (serum-free) HSCs and extracts from leptin-treated cells



**Fig. 3.** Pan-neutralizing antibody for TGF $\beta$ 1 fails to significantly reduce leptin-induced total mRNA for  $\alpha$ 2(I) collagen in HSCs. RPA reported exactly as in Figures 1 and 2. The pan-neutralizing antibody [40  $\mu$ g/plate] was added for 4 h prior to the addition of leptin. Following 24-h HSC exposure to leptin, while a decrease in total mRNA was demonstrated by the treatment combination (L + T), this effect was not significant,  $P = 0.09$ . This figure is representative of three independent experiments performed in triplicate. RPA was performed for both  $\alpha$ 2(I) collagen

and  $\beta$ -actin and results presented as in Figure 1. Y, yeast tRNA and riboprobe for  $\alpha$ 2(I) collagen with RNase reveals complete digestion of tRNA and  $\alpha$ 2(I) collagen riboprobe. P, mouse liver RNA and riboprobe for  $\alpha$ 2(I) collagen in the presence of RNase reveal a protected fragment for the gene from mouse liver RNA.  $\beta$ ,  $\beta$ -actin mRNA was used for loading controls and as a house-keeping gene, and confirms a protected fragment from stellate cells. Time indicated in hours.

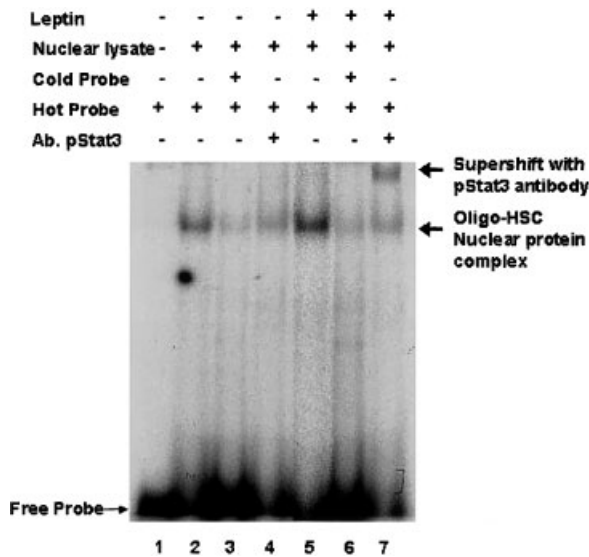


**Fig. 4.** Leptin does not alter TGF $\beta$ 1 production by HSCs in vitro when compared to cells grown in media with serum. HSCs were grown as described previously in either DMEM containing 15% FBS, or HSCs were grown in SF-DMEM with 100 ng/ml recombinant leptin. At times indicated media from cultures were collected and ELISA for TGF $\beta$ 1 was performed. The experiments were performed twice in triplicate for all times indicated in hours. Although at 9 h, leptin may have resulted in a significant increase in TGF $\beta$ 1 compared to HSCs in sera-containing media, this was not found at all other time points for which TGF $\beta$ 1 cytokine activity was assayed.

were harvested and EMSA with super shift analysis were performed. Figure 5 is representative of results that reveal leptin-treated HSC nuclear extracts bind with higher affinity to the SIE consensus sequence. Unlabeled SIE oligonucleotide sequences abolish labeled binding indicating specificity for pStat3. Antibodies to the pStat3-oligonucleotide complex nearly retarded the entire binding complex (lane 7), confirming specificity for a large component of the nuclear protein-DNA binding complex. These data implicate leptin as an important mediator in *c-fos* promoter activation.

#### Inflammation as Assessed by Serum Alanine Aminotransferase Measurements Reveals Higher Levels in *ob/ob* Mice Exposed to $\text{CCl}_4$ but not in Their Treated Lean Littermates

Since NASH is defined as including neuroinflammatory activity as a histologic hallmark [Diehl, 1999], ALT measurements were

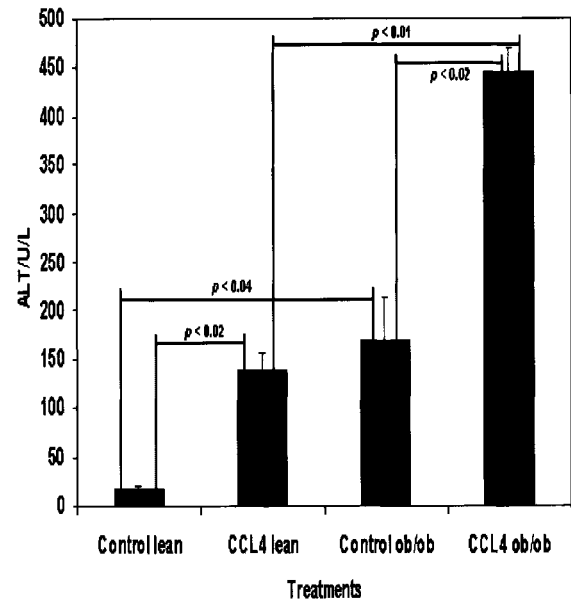


**Fig. 5.** Electrophoretic mobility shift assay (EMSA) demonstrates that leptin enhances pStat3 binding activity from HSC-treated nuclear extracts to the c-fos promoter. Leptin-treated HSC nuclear extracts were harvested as described in Methods. Cultures were established as described previously, although the control, or untreated HSCs were exposed to DMEM with 0.1% FBS. **Lane 1** is labeled free probe, an oligonucleotide known to bind AP-1. **Lane 2**, untreated HSC nuclear lysates binding activity to AP-1 oligo; lane 7, leptin-treated HSC nuclear lysates binding demonstrates significant activity over activity shown in lane 2. **Lanes 3 and 6**, demonstrate competition analysis with unlabeled oligonucleotide, which abrogates radioactive signal indicating specificity of the nuclear protein-oligonucleotide binding. **Lanes 4 and 7** represent supershift analysis with a polyclonal antibody against AP-1 (Santa Cruz Biotechnologies, Santa Cruz, CA); lane 7, demonstrates significant supershift of leptin-treated HSC-AP-1 oligonucleotide complex, which is absent in lane 4 in the untreated HSC nuclear extracts.

included in experiments which were completed and in which we previously published that the lean littermates, and not the *ob/ob* mice themselves, had significant fibrosis as assessed by picrosirius red staining [Janqueira et al., 1979], and had more activated  $\alpha$ -smooth muscle positive cells ( $\alpha$ -SMA) present by histologic analysis. Other groups using other hepatotoxins in animal studies have reported similar histologic data [Ikejima et al., 2002]. Figure 6 in this paper demonstrates that CCl<sub>4</sub>-treated *ob/ob* mice appear to be at least as sensitive to CCl<sub>4</sub> treatment, and in fact have significantly increased ALT values than the lean littermates that developed significant histologic fibrosis and  $\alpha$ -SMA positive cells.

#### DISCUSSION

The results of these experiments support the hypothesis that leptin is a profibrogenic



**Fig. 6.** Serum ALT values from sera of wild-type *ob/ob* mice. Sera were collected from animals following CCl<sub>4</sub> as described previously. Measurements were performed using a multi-analysis channel in the Veterinary Medicine Core. For each treatment condition, data shown are representative of three individual animals' sera. The lean (wild-type) and *ob/ob* mice appear to respond significantly to CCl<sub>4</sub> as assessed by ALT. Moreover, there is a significant difference between control *ob/ob* ALT values and CCl<sub>4</sub>-treated *ob/ob* mice. There is a significant difference between the CCl<sub>4</sub>-treated wild-type animals and either the CCl<sub>4</sub>-treated *ob/ob* mice. Data analysis: paired Student's *t* test.

substance that results in a net increase of  $\alpha 2(I)$  collagen mRNA. This effect does not appear to be dependent on translation but rather transcription given the fact that actinomycin D significantly reduced  $\alpha 2(I)$  collagen mRNA levels compared to HSCs treated with leptin alone. These results warrant more rigorous molecular analyses, including nuclear run-on experiments, to determine if in fact leptin results in a nascent increase in  $\alpha 2(I)$  collagen mRNA or whether leptin acts to stabilize the half-life of the mRNA. mRNA stabilization for the type I collagen genes is known to occur by 3' untranslated region binding to CAP proteins as suggested recently [Maata et al., 1994; Stefanovic et al., 1997; Lindquist et al., 2000]. Several groups now agree that leptin is a profibrogenic substance in the development of liver fibrosis but the mechanism and cell types targeted are subject to dispute. One hypothesis suggests that Kupffer cells or sinusoidal endothelial cells possess leptin receptors capable of signaling and thus in turn release transforming growth factor

beta to mediate the effect of leptin on activated HSCs. We support the hypothesis that leptin acts directly on HSCs and target specific signal transduction systems to alter HSC gene expression.

If in fact leptin can only act indirectly on HSCs, then the pan-neutralizing antibody study should have significantly abrogated the net increase in  $\alpha 2(I)$  collagen mRNA in Figure 3 since it is widely published that culture-activated primary HSCs produce TGF $\beta$ 1 in vitro [Bissell et al., 1995] and in vivo [Kanzler et al., 1999]. Figure 4 demonstrates that leptin-treated HSCs do not appear to result in significantly increased TGF $\beta$ 1 production. Data published recently [Tang et al., 2002] also indicate that leptin does not result in enhanced TGF $\beta$ 1 production, but rather increased receptor type II. An increase in TGF $\beta$ 1 receptor isoforms may be also increased by HSC leptin exposure as has been reported occurs in renal mesangial cells [Wolf et al., 2002]. Hence, an emerging consensus suggests that leptin may enhance HSC collagen gene expression directly, and via heightened HSC sensitization to TGF  $\beta$ 1. Additional studies will need to be performed related to the independent role of leptin as a profibrogenic cytokine for the following reasons. The major portion of TGF-beta is secreted as part of an inactive complex and the details of the activation process in liver have not yet been elucidated. The initially striking simplicity of the core TGF-beta/Smad signaling pathways is rapidly giving way to a much more complex view of intracellular signal transduction mechanisms and recent work has demonstrated the importance of cross-talk among different signaling pathways to either specify, enhance, or inhibit TGF-beta responses [Gressner et al., 2002].

In previous work, we have shown that Stat3 is phosphorylated in HSCs when exposed to leptin. Here we show by EMSA, that leptin specifically enhances pStat3-binding activity from leptin-treated HSC nuclear extracts to the SIE, which results in enhanced AP-1 production. While controversy remains as to the role of potential signal transduction in HSCs, this is the first time leptin has been shown to alter nuclear protein binding activity in HSCs. Other groups report leptin's action on HSCs but have only detected the short form of the leptin receptor (Ob-R<sub>S</sub> or Ob-Ra) [Ikejima et al., 2002; Tang et al., 2002]. To date, data making a case for Ob-Ra receptor signaling is limited [Wolf et al., 2002].

The constituents of each AP-1 complex result from the dimerization of members of the Jun and fos families of immediate early genes [Gonzales and Bowden, 2002]. AP-1 is widely known to be critical to collagen gene regulation [Armendariz-Borunda et al., 1994; Chung et al., 1996; Vergeer et al., 2000]. The data presented here implicate that leptin does directly affect collagen gene expression and signals via at least Stat3 to activate a critical component of the AP-1 transcription factor. It is possible that leptin may act to alter gene expression or extracellular matrix remodeling during chronic liver injury by acting both directly on HSCs and on nearby Kupffer cells and possibly sinusoidal endothelial cells since other recently published reports indicate that endothelial cells play a key role in leptin-initiated fibrosis in other mammalian organ systems [Sierra-Honigmann et al., 1998; Wolf et al., 2002].

Finally, we examined, in our ongoing in vivo work, whether *ob/ob* mice are resistant to inflammation by a well-studied hepatotoxin, CCl<sub>4</sub>. We have previously shown that despite the presence of significant steatosis, but in the absence of leptin, *ob/ob* mice did not appear to develop significant fibrosis or activation of HSCs as assessed by  $\alpha$ -SMA positive cell staining [Saxena et al., 2002]. In fact, by serum ALT measurements in these animals, we find that to the contrary of other published reports suggesting *ob/ob* animals are resistant to inflammation [Leclercq et al., 2000] and may, therefore, be resistant to inflammation at baseline, actually have a more robust degree of inflammation based on the ALT values before exposure to CCl<sub>4</sub>. Following CCl<sub>4</sub> administration the ALT values in the *ob/ob* mice were significantly greater than in their lean littermates. These findings did not translate into either significant collagen deposition or localization of  $\alpha$ -SMA positive cells and there was similar data related to aspartate aminotransferase (AST) values.

In alcoholic liver disease, it is well established that necro-inflammatory activity is not required for fibrogenesis to occur [French, 1989; Reeves et al., 1996] and thus the relationship between inflammation in NASH and liver fibrogenesis to leptin will need further clarification. Since obesity involves a state of leptin resistance and not a state of deficiency, models of resistance, e.g., impaired leptin signaling models, must also be studied. It is also not known whether leptin production is a local



phenomenon and is not related to systemic leptin resistance in patients with the metabolic syndrome X—obesity, type II diabetes mellitus, hyperlipidemia, etc. Alternatively, work is ongoing to determine whether steatosis, or steatohepatitis is a marker for fibrosis or whether the presence of fat-laden hepatocytes results in the generation of reactive oxidant species—or a ‘second hit’ [Chitturi and Farrell, 2001; Reid, 2001] that may lead to HSC activation and development of fibrosis.

## REFERENCES

- Anania FA, Potter JJ, Rennie-Tankersley L, Mezey E. 1995. Effects of acetaldehyde on nuclear protein binding to the nuclear factor I consensus sequence in the  $\alpha 2(I)$  collagen promoter. *Hepatology* 21:1640–1648.
- Armendariz-Borunda J, Simkevich CP, Roy N, Raghov R, Kang AH, Seyer JM. 1994. Activation of Ito cells involves regulation of AP-1 binding proteins and induction of type I collagen gene expression. *Biochem J* 304:817–824.
- Bissell DM, Wang SS, Jarnagin WR, Roll FJ. 1995. Cell-specific expression of transforming growth factor-beta in rat liver. Evidence for autocrine regulation of hepatocyte proliferation. *J Clin Invest* 96:447–455.
- Campfield LA, Smith FJ, Guisez Y, Devos R, Burn P. 1995. Recombinant mouse OB protein: Evidence for a peripheral signal linking adiposity and central neural networks. *Science* 269:546–549.
- Caro JF, Sinha MK, Koaczynski JW, Zhang PL, Considine RV. 1996. Leptin: The tale of an obesity gene. *Diabetes* 45:1455–1462.
- Chitturi S, Farrell GC. 2001. Etiopathogenesis of non-alcoholic steatohepatitis. *Semin Liver Dis* 21:27–41.
- Chomczynski P, Sacchi N. 1987. Single-step method of RNA isolation by acid guanidinium thiocyanate-phenol-chloroform extraction. *Anal Biochem* 162:156–159.
- Chung KY, Agarwal A, Uitto J, Mauviel A. 1996. An AP-1 binding sequence is essential for regulation of the human  $\alpha 2(I)$  collagen (COL1A2) promoter activity by transforming growth factor-beta. *J Biol Chem* 271:3272–3278.
- Diehl AM. 1999. Non-alcoholic steatohepatitis. *Semin Liver Dis* 19:221–229.
- Fibbi G, Pucci M, D'Alessio S, Grappone C, Pellegrini G, Salzano R, Casini A, Milani S, Del Rosso M. 2001. Transforming growth factor beta-1 stimulates invasivity of hepatic stellate cells by engagement of the cell-associated fibrinolytic system. *Growth Factors* 19:87–100.
- French SW. 1989. Biochemical basis for alcohol-induced liver injury. *Clin Biochem* 22:41–49.
- Friedman SL. 2000. Molecular regulation of hepatic fibrosis, an integrated cellular response to tissue injury. *J Biol Chem* 275:2247–2250.
- Friedman SL, Roll FJ. 1987. Isolation and culture of hepatic lipocytes, Kupffer cells, and sinusoidal endothelial cells by density gradient centrifugation with stractan. *Anal Biochem* 161:207–218.
- Gonzales M, Bowden GT. 2002. Ultraviolet B (UVB) induction of the c-fos promoter is mediated by phospho-cAMP response element binding protein (CREB) binding to the CRE and c-fos activator protein 1 site (FAP1) cis elements. *Gene* 293:169–179.
- Greeve M, Ferrell L, Kim M, Combs C, Roberts J, Ascher N, Wright TL. 1993. Cirrhosis of undefined pathogenesis: Absence of evidence for unknown viruses or autoimmune processes. *Hepatology* 17:593–598.
- Gressner AM, Weiskirchen R, Breitkopf K, Dooley S. 2002. Roles of TGF-beta in hepatic fibrosis. *Front Biosci* 7:d793–d807.
- Honda H, Ikejima K, Hirose M, Yoshikawa M, Lang T, Enomoto N, Kitamura T, Takei Y, Sato N. 2002. Leptin is required for fibrogenic responses induced by thioacetamide in the murine liver. *Hepatology* 36:12–21.
- Ikejima K, Takei Y, Honda H, Hirose M, Yoshikawa M, Zhang YJ, Lang T, Fukuda T, Yamashina S, Kitamura T, Sato N. 2002. Leptin receptor-mediated signaling regulates hepatic fibrogenesis and remodeling of extracellular matrix in the rat. *Gastroenterology* 122:1399–1410.
- Janqueira L, Bignolas G, Brentani R. 1979. Picrosirius staining plus polarization microscopy: A specific method for collagen detection in tissue sections. *Histochem J* 11:447–455.
- Kanzler S, Lohse AW, Keil A, Henninger J, Dienes HP, Schirmacher P, Rose-John S, zum Buschenfelde KH, Blessing M. 1999. TGF-beta1 in liver fibrosis: An inducible transgenic mouse model to study liver fibrogenesis. *Am J Physiol* 276:G1059–G1068.
- Leclercq IA, Field J, Enriquez A, Farrell GC, Robertson GR. 2000. Constitutive and inducible expression of hepatic CYP2E1 in leptin-deficient *ob/ob* mice. *Biochem Biophys Res Commun* 268:337–344.
- Lindquist JN, Kauschke SG, Stefanovic B, Burchardt ER, Brenner DA. 2000. Characterization of the interaction between  $\alpha$ CP(2) and the 3'-untranslated region of collagen  $\alpha$ 1(I) mRNA. *Nucleic Acids Res* 28:4306–4316.
- Lowry OH, Rosebrough NJ, Farr AL, Randall RJ. 1951. Protein measurement with the Folin phenol reagent. *J Biol Chem* 193:265–275.
- Maatta A, Penttinen RP. 1994. Nuclear and cytoplasmic  $\alpha$ 1(I) collagen mRNA-binding proteins. *FEBS Lett* 340:71–77.
- Pelleymounter MA, Cullen MJ, Baker MB, Hecht R, Winters D, Boone T, Collins F. 1995. Effects of the obese gene product on body weight regulation in *ob/ob* mice. *Science* 269:540–543.
- Poonawala A, Nair SP, Thuluvath PJ. 2000. Prevalence of obesity and diabetes in patients with cryptogenic cirrhosis: A case-control study. *Hepatology* 32:689–692.
- Potter JJ, Cheneval D, Dang CV, Resar LMS, Mezey E, Yang VW. 1991a. The upstream stimulatory factor binds to and activate the promoter of the rat class I alcohol dehydrogenase gene. *J Biol Chem* 266:15457–15463.
- Potter JJ, Mezey E, Christy RJ, Crabb DW, Stein PH, Yang VW. 1991b. CCAAT/enhancer binding protein binds and activates the promoter of the class I alcohol dehydrogenase gene. *Arch Biochem Biophys* 285:246–251.
- Reeves HL, Burt AD, Wood S, Day CP. 1996. Hepatic stellate cell activation occurs in the absence of hepatitis in alcoholic liver disease and correlates with the severity of steatosis. *J Hepatol* 25:677–683.
- Reid AE. 2001. Non-alcoholic steatohepatitis. *Gastroenterology* 121:710–723.

- Robertson LM, Kerppola TK, Vendrell M, Luk D, Smeyne RJ, Bocchiaro C, Morgan JI, Curran T. 1995. Regulation of *c-fos* expression in transgenic mice requires multiple interdependent transcription control elements. *Neuron* 14:241–252.
- Saxena NK, Ikeda K, Rockey DC, Friedman SL, Anania FA. 2002. Leptin in hepatic fibrosis: Evidence for increased collagen production in stellate cells and lean littermates of *ob/ob* mice. *Hepatology* 35:762–771.
- Sierra-Honigmann MR, Nath AK, Murakami C, Garcia-Cardena G, Papapetropoulos A, Sessa WC, Madge LA, Schechner JS, Schwabb MB, Polverini PJ, Flores-Riveros JR. 1998. Biological action of leptin as an angiogenic factor. *Science* 281:1683–1686.
- Stefanovic B, Hellerbrand C, Holcik M, Briendl M, Aliebbhaber S, Brenner DA. 1997. Posttranscriptional regulation of collagen alpha1(I) mRNA in hepatic stellate cells. *Mol Cell Biol* 17:5201–5209.
- Tang M, Potter J, Mezey E. 2002. Leptin enhances the effect of transforming growth factor beta in increasing type I collagen formation. *Biochem Biophys Res Commun* 297:906.
- Vergeer WP, Sogo JM, Pretorius PJ, de Vries WN. 2000. Interaction of Ap1, Ap2, and Sp1 with the regulatory regions of the human pro-alpha1(I) collagen gene. *Arch Biochem Biophys* 377:69–79.
- Wolf G, Chen S, Han DC, Ziyadeh FN. 2002. Leptin and renal disease. *Am J Kidney Dis* 39:1–11.
- Zhang Y, Proenca R, Maffei M, Barone M, Leopold L, Friedman JM. 1994. Positional cloning of the mouse obese gene and its human homologue. *Nature* 372:425–432.